

MANUFACTURED FROM FORGED PARTS**MATERIAL:**

- Alloyed carburized steel at chrome-manganese 1.7131 (16MnCr5).

EXECUTION:

- Carburized, hardness.
- Surface hardness HRC 58±2 (670±40 HV30)
- Depth minimum 0,5 mm.
- Tensile strength in core minimum 800 N/mm² after carburizing.

ACCURACY:

- Taper according to DIN 254
- Taper angle: tolerance AT 3 DIN 7178 part 1 and DIN 2080 part 1.
- Other tolerances according to DIN 7160 and 7168.
- Taper surface roughness $R_z < 0,001$ mm.

HERGESTELLT AUS GESCHMIEDETEN TEILEN**MATERIAL:**

- Legierter Aufgekohlter Stahl mit Chrom-Mangan 1.7131 (16MnCr5).

KONSTRUKTIONS DATEN:

- Aufgekohlt, gehärtet und angelassen.
- Oberflächenhärte HRC 58±2 (670±40 HV30).
- Aufgekohlt auf minimum 0,5 mm Tiefe.
- Zugfestigkeit im Kern minimum 800 N/mm² nach der Aufkohlung.

GENAUIGKEIT:

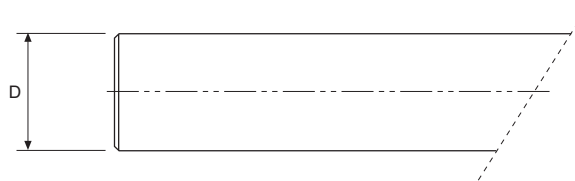
- Dorn nach DIN 254.
- Kegelwinkel: Toleranz AT 3 DIN 7178 Teil 1 und DIN 2080 Teil 1.
- Andere Toleranzen entsprechend DIN 7160 und 7168.
- Rauigkeit der Oberfläche $R_z < 0,001$ mm.

TOLERANCE AT :

- Indicates the tolerance of size D surface between the real and the theoretical value of the taper conicity.
- This value of surface D must always be less (negative), never more (positive) in order to GUARANTEE a good toolholder fixation at the bigger taper diameter.

TOLERANZ AT :

- Zeigt die Toleranz auf der Messebene D zwischen dem tatsächlichen Wert der Kegelkonizität und dem theoretischen Wert.
- Dieser Wert auf der Messebene D sollte immer minus (negativ) sein, nie plus (positiv), um für einen guten Halt des Futters in den größeren Durchmesser des Kegels zu garantieren.

**DIN 1835 A/B
DIN 1835 B+E**

B h6 mm					
16	20	25	32	40	50



10
DIN 208011 13
DIN 69871-A16
HSK DIN 69893-117
TS ISO 26622-118
PSC ISO 26623-120 23
JIS B 6339-BT25
CHIRONBORING HEADS
BOHRKÖPFEMORSE SHANKS
MORSE SCHÄPFTECYLINDRICAL SHANKS
ZYLINDRISCHE SCHÄPFTE

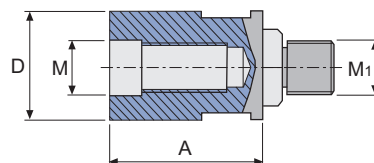
06.315

CYLINDRICAL MODULAR SHANKS

Front contact extensions for modular tools

ZYLINDRISCHE MODULAR-SCHÄPFTE

Vorder-Verlängerungen für Modular-Werkzeuge



REF.	D mm	A mm	M mm	M ₁ mm	kg
06.315.08.08	14	30	8	8	0,020
06.315.10.10	18	35	10	10	0,050
06.315.12.12	21	40	12	12	0,075
06.315.16.16	29	40	16	16	0,150

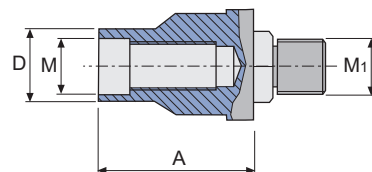
06.315

CYLINDRICAL MODULAR SHANKS

Front contact reducers for modular tools

ZYLINDRISCHE MODULAR-SCHÄFTE

Vorder-Reduzierungen für Modular-Werkzeuge



REF.	D mm	A mm	M mm	M ₁ mm	kg
06.315.08.10	14	30	8	10	0,040
06.315.10.12	18	35	10	12	0,060
06.315.12.16	21	40	12	16	0,150
06.315.08.12	14	40	8	12	0,075
06.315.10.16	18	60	10	16	0,240

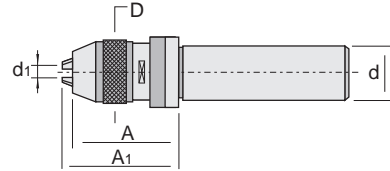
DIN 1835-A
40.295


SELF CLAMPING SHORT PRECISION DRILL CHUCKS

for right turn only



KURZE SELBSTSPANN-BOHRFUTTER

nur für Rechtsumdrehung



REF.	d mm	d ₁ mm	D mm	A mm	A ₁ max mm	 Kg
40.295.25.08	25	0 - 8	36,0	68	76	-
40.295.30.08	30	0 - 8	36,0	68	76	-
40.295.32.08	32	0 - 8	36,0	68	76	-
40.295.32.13		0-13	50,5	90	101	-
40.295.40.13	40	0-13	50,5	90	101	-
40.295.40.16		3-16	58,0	96	109	-
40.295.50.16	50	3-16	58,0	96	109	-

* SUPPLIED WITH WRENCH / * GELIEFERT MIT SCHLÜSSEL

REF.		
40.295.25.08	11206	50008
40.295.30.08	11206	50008
40.295.32.08	11206	50008
40.295.32.13	11108	50013
40.295.40.13	11108	50013
40.295.40.16	11108	50013
40.295.50.16	11108	50016

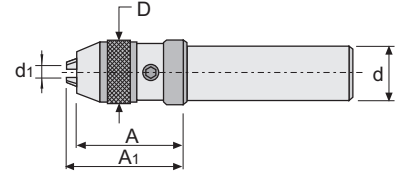
DIN 1835-A


40.296**CNC-UNIVERSAL PRECISION DRILL CHUCKS**

for left and right hand turn



CNC-UNIVERSAL BOHRFUTTER, GENAUIGKEIT-AUSFÜHRUNG

für Links- und Rechtsumdrehung



REF.	d mm	d ₁ mm	D mm	A mm	A ₁ max mm	 kg
40.296.25.13	25	1-13	50	80,5	87,5	1,170
40.296.32.13	32	1-13	50	80,5	87,5	1,380
40.296.32.16		3-16	56	87,5	94,5	1,640
40.296.40.13	40	1-13	50	80,5	87,5	1,710
40.296.40.16		3-16	57	87,5	94,5	1,970

* SUPPLIED WITH WRENCH / * GELIEFERT MIT SCHLÜSSEL

REF.		3 x 
40.296.25.13	50706	60313
40.296.32.13	50706	60313
40.296.32.16	50706	60313
40.296.40.13	50706	60313
40.296.40.16	50706	60313

10
DIN 208011 13
DIN 69871-A16
HSK DIN 69893-117
TS ISO 26622-118
PSC ISO 26623-120 23
JIS B 6339-BT25
CHIRONBORING HEADS
BOHRKÖPFEMORSE SHANKS
MORSE SCHAFTECYLINDRICAL SHANKS
ZYLINDRISCHE SCHAFTE

DIN 1835-A

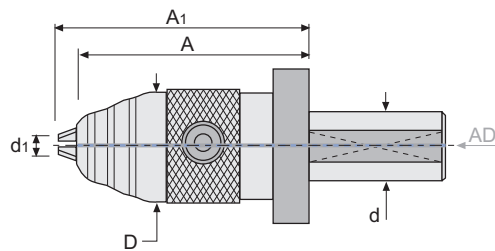
43.296

CNC-UNIVERSAL PRECISION DRILL CHUCKS

for left and right hand turn

CNC-UNIVERSAL BOHRFUTTER, GENAUIGKEIT-AUSFÜHRUNG



für Links- und Rechtsumdrehung



REF.	d mm	d ₁ mm	D mm	A mm	A ₁ max mm	kg
43.296.25.13	25	1-13	50	80,5	87,5	1,190
43.296.32.13	32	1-13	50	80,5	87,5	1,390
43.296.32.16		3-16	56	87,5	94,5	1,650
43.296.40.13	40	1-13	50	80,5	87,5	1,720
43.296.40.16		3-16	57	87,5	94,5	1,990

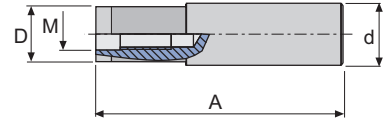
CENTRAL COOLANT SUPPLY
KÜHLMITTEL DURCH DIE MITTE

* SUPPLIED WITH WRENCH / * GELIEFERT MIT SCHLÜSSEL

REF.		3 x 
43.296.25.13	50706	60313
43.296.32.13	50706	60313
43.296.32.16	50706	60313
43.296.40.13	50706	60313
43.296.40.16	50706	60313

40.315

CYLINDRICAL MODULAR SHANKS
for modular milling heads
ZYLINDRISCHE MODULAR-SCHÄFTE
Für Modular-Fräsköpfe



REF.	d mm	A mm	M mm	D mm	⚖️ kg
40.315.20.10	20	125	M10	18	0,300
40.315.25.12	25	125	M12	21	0,450
40.315.32.16	32	150	M16	30	-
40.315.12.06/125HD	12	125	M6	10	0,230
40.315.16.08/125HD	16	125	M8	14	0,405
40.315.12.06/150HD	12	150	M6	10	0,265
40.315.16.08/150HD	16	150	M8	14	0,470
40.315.20.10/150HD	20	150	M10	18	0,755
40.315.25.12/150HD	25	150	M12	21	1,105
40.315.20.10/200HD	20	200	M10	18	1,005
40.315.25.12/200HD	25	200	M12	21	1,460
40.315.32.16/250HD	32	250	M16	30	-

HD= Antivibration shank (heavy metal)

HD= Schwingungsgedämpfter Schaft (Schwermetall)

DIN 1835-A

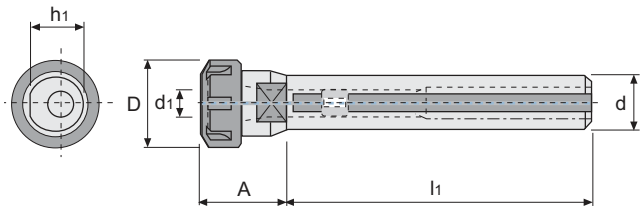
40.453

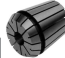




COLLET CHUCKS FOR COLLETS DIN 6499 (ER) SYSTEM

for tools with cylindrical shank

SPANNZANGENFUTTER FÜR SPANNZANGEN DIN 6499 (ER)

für Werkzeuge mit Zylinderschaft



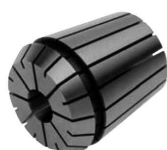
REF.	d mm		d ₁ mm	A mm	l ₁ mm	D mm	h ₁ mm					
40.453.20.16/050	20	ER16	0,5-10	31,5	50	32	19,5	45316	50216	19210	0,150	
40.453.20.16/100		ER16	0,5-10	31,5	100	32	19,5	45316	50216	19210	0,260	
40.453.20.16/150		ER16	0,5-10	31,5	150	32	19,5	45316	50216	19210	0,350	
40.453.20.25/050		ER25	1,0-16	46,5	50	42	19,5	45325	50225	19210	0,300	
40.453.20.25/100		ER25	1,0-16	46,5	100	42	19,5	45325	50225	19210	0,380	
40.453.20.25/150		ER25	1,0-16	46,5	150	42	19,5	45325	50225	19210	0,470	
40.453.20.32/050	32	ER32	2,0-20	54,5	50	50	19,5	45332	50232	19210	0,440	
40.453.20.32/100		ER32	2,0-20	54,5	100	50	19,5	45332	50232	19210	0,520	
40.453.25.20/050		25	ER20	1,0-13	33,5	50	35	24,0	45320	50220	19212	0,250
40.453.25.20/100			ER20	1,0-13	33,5	100	35	24,0	45320	50220	19212	0,390
40.453.25.20/150			ER20	1,0-13	33,5	150	35	24,0	45320	50220	19212	0,520
40.453.25.25/050			ER25	1,0-16	46,5	50	42	24,0	45325	50225	19216	0,350
40.453.25.25/100	ER25		1,0-16	46,5	100	42	24,0	45325	50225	19216	0,420	
40.453.25.25/150	ER25		1,0-16	46,5	150	42	24,0	45325	50225	19216	0,520	
40.453.25.32/050	32	ER32	2,0-20	52,5	50	50	24,0	45332	50232	19216	0,440	
40.453.25.32/100		ER32	2,0-20	52,5	100	50	24,0	45332	50232	19216	0,540	
40.453.25.32/150		ER32	2,0-20	52,5	150	50	24,0	45332	50232	19216	0,730	
40.453.25.40/050		ER40	3,0-30	60,5	50	63	24,0	45340	50240	19216	0,730	
40.453.32.32/050		32	ER32	2,0-20	52,5	50	50	31,0	45332	50232	19218	0,550
40.453.32.32/100			ER32	2,0-20	52,5	100	50	31,0	45332	50232	19218	0,400
40.453.32.40/050	ER40		3,0-30	60,5	50	63	31,0	45340	50240	19218	0,860	
40.453.40.32/075	40	ER32	2,0-20	52,0	75	50	38,0	45332	50232	19218	0,830	
40.453.40.40/075		ER40	3,0-30	60,5	75	63	38,0	45340	50240	19218	1,240	

WITH CLAMPING FLAT FOR CNC LATHES AND TURRET LATHES

MIT SPANFLÄCHE FÜR CNC-DREHMASCHINEN UND REVOLVERDREHBÄNKE

* SUPPLIED WITHOUT WRENCH / * GELIEFERT OHNE SCHLÜSSEL

REF.	ACCESSORIES / ZUBEHÖR
ERXX	Collets double slot DIN 6499 - Form B (ER) / Spannanzgen mit Doppelnut DIN 6499 - Form B (ER)
ERCXX	Sealed collets DIN 6499 (ER) / Abgedichtete Spannanzgen DIN 6499 (ER)
ERTXX	Collets DIN 6499 - Form Canela (ER) / Spannanzgen DIN 6499 - Form Canela (ER)



ERXX

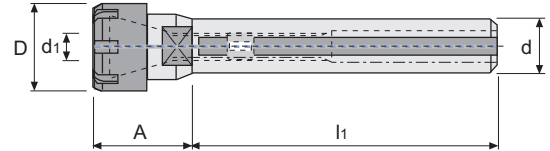


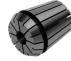




ERCXX



ERTXX

For more information see page / Für weitere Informationen siehe Seite: K.13, K.17, K.19



REF.	d mm		d ₁ mm	A mm	l ₁ mm	D mm				
40.455.12.16/080	12	ER16	0,5-10	40,5	80	22	45516	50916	19106	0,100
40.455.16.16/050	16	ER16	0,5-10	36,5	50	22	45516	50916	19210	0,100
40.455.16.16/100		ER16	0,5-10	36,5	100	22	45516	50916	19210	0,170
40.455.16.16/150		ER16	0,5-10	36,5	150	22	45516	50916	19210	0,230
40.455.16.20/050	20	ER20	1,0-13	33,5	50	28	45520	50920	19210	0,140
40.455.16.20/100		ER20	1,0-13	33,5	100	28	45520	50920	19210	0,190
40.455.16.20/150		ER20	1,0-13	33,5	150	28	45520	50920	19210	0,250
40.455.20.16/050	20	ER16	0,5-10	30,5	50	22	45516	50916	19210	0,130
40.455.20.16/100		ER16	0,5-10	30,5	100	22	45516	50916	19210	-
40.455.20.16/141		ER16	1,0-10	34,0	141	22	45516	50916	19210	-
40.455.20.16/150	ER16	0,5-10	30,5	150	22	45516	50916	19210	0,320	
40.455.20.16/226	ER16	1,0-10	34,0	226	22	45516	50916	19210	-	
40.455.20.20/050	20	ER20	1,0-13	33,5	50	28	45520	50920	19212	-
40.455.20.20/100		ER20	1,0-13	33,5	100	28	45520	50920	19212	0,230
40.455.20.20/150		ER20	1,0-13	33,5	150	28	45520	50920	19212	0,300
40.455.25.20/223	25	ER20	1,0-13	37,0	223	28	45520	50920	19216	-
40.455.32.25/218	32	ER25	1,0-16	42,0	218	35	45525	50925	19222	-

WITH "MINI" COLLET NUT
MIT SPANNMUTTER "MINI"

* SUPPLIED WITHOUT WRENCH / * GELIEFERT OHNE SCHLÜSSEL

REF.	ACCESSORIES / ZUBEHÖR
ERXX	Collets double slot DIN 6499 - Form B (ER) / Spannzangen mit Doppelnut DIN 6499 - Form B (ER)
ERCXX	Sealed collets DIN 6499 (ER) / Abgedichtete Spannzangen DIN 6499 (ER)
ERTXX	Collets DIN 6499 - Form Canela (ER) / Spannzangen DIN 6499 - Form Canela (ER)



ERXX



ERCXX



ERTXX

For more information see page / Für weitere Informationen siehe Seite: K.13, K.17, K.19

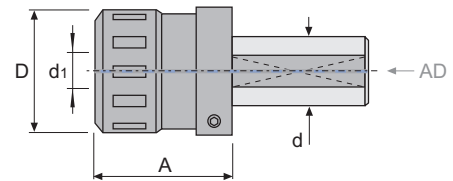
DIN 1835-B






43.457**MECHANICAL COLLET CHUCKS WITH HIGH TIGHTENING TORQUE**

for DIN 6499 (ER) collets

MECHANISCHE SPANNZANGENFUTTER MIT HOHEM ANZUGSMOMENT

für Spannzangen DIN 6499 (ER)



REF.	d mm		d ₁ mm	A mm	D mm				
43.457.25.32	25	ER32	2-20	79	54	45732	19006	50704	1,210
43.457.32.32	32	ER32	2-20	79	54	45732	19006	50704	1,540
43.457.40.40	40	ER40	3-30	88	65	45740	19010	50706	2,790

The alternative to hydraulic or other systems.
High tightening and precision.
Central coolant supply.

Die Alternative zu hydraulischen und anderen
Systemen.
Hohes Anzugsmoment und hohe Genauigkeit.
Kühlmittel durch die Mitte.

* SUPPLIED WITH WRENCH / * GELIEFERT MIT SCHLÜSSEL

REF.	ACCESSORIES / ZUBEHÖR
ERXX	Collets double slot DIN 6499 - Form B (ER) / Spannzangen mit Doppelnut DIN 6499 - Form B (ER)
ERCXX	Sealed collets DIN 6499 (ER) / Abgedichtete Spannzangen DIN 6499 (ER)



ERXX

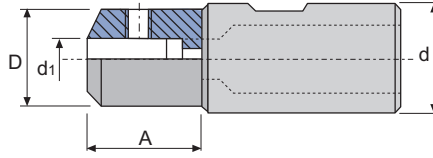


ERCXX

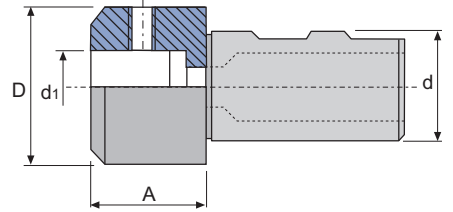
For more information see page / Für weitere Informationen siehe Seite: K.13, K.17



FORM A



FORM B



REF.	d mm	d ₁ H5 mm	A mm	D mm	FORM	kg
42.300.20.06	20	6	30	25	B	0,170
42.300.20.08		8	30	28	B	0,200
42.300.20.10		10	35	35	B	0,330
42.300.20.12		12	35	42	B	0,410
42.300.20.14		14	35	44	B	0,410
42.300.20.16		16	60	48	B	0,790
42.300.20.18		18	60	50	B	0,945
42.300.25.06	25	6	30	25	A	0,250
42.300.25.08		8	30	28	A	0,275
42.300.25.10		10	35	35	B	0,410
42.300.25.12		12	35	42	B	0,460
42.300.25.14		14	35	44	B	0,500
42.300.25.16		16	40	48	B	0,600
42.300.32.06	32	6	30	25	A	0,400
42.300.32.08		8	30	28	A	0,460
42.300.32.10		10	35	35	B	0,520
42.300.32.12		12	35	42	B	0,570
42.300.32.14		14	35	44	B	0,590
42.300.32.16		16	40	48	B	0,700
42.300.32.18		18	40	50	B	0,750
42.300.32.20		20	40	52	B	0,770

REF.	
42.300.20.06	15106
42.300.20.08	15108
42.300.20.10	15110
42.300.20.12	15212
42.300.20.14	15212
42.300.20.16	15314
42.300.20.18	15314
42.300.25.06	15106
42.300.25.08	15108
42.300.25.10	15110
42.300.25.12	15212
42.300.25.14	15212
42.300.25.16	15314
42.300.32.06	15106
42.300.32.08	15108
42.300.32.10	15110
42.300.32.12	15212
42.300.32.14	15212
42.300.32.16	15314
42.300.32.18	15314
42.300.32.20	15216



10
DIN 208011 13
DIN 69871-A16
HSK DIN 69893-117
TS ISO 26622-118
PSC ISO 26623-120 23
JIS B 6339-BT25
CHIRONBORING HEADS
BOHRKÖPFEMORSE SHANKS
MORSE SCHAFTECYLINDRICAL SHANKS
ZYLINDRISCHE SCHAFTE

DIN 1835-B

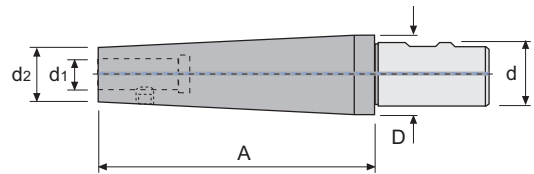
42.311

SHORT AND LONG REDUCING BUSHINGS

for cutters with cylindrical shank and weldon flat DIN 1835-B

KURZE UND LANGE REDUZIERHÜLSEN

für Fräser mit Zylinderschaft und Weldonfläche DIN 1835-B



REF.	d mm	d ₁ H5 mm	A mm	D mm	FORM	d ₂ mm	Kg
42.311.40.08	40	8	175	50	C	16	1,210
42.311.40.10		10	175	50	C	20	-
42.311.40.12		12	175	50	C	22	1,540
42.311.40.16		16	175	50	C	28	-
42.311.40.20		20	175	50	C	34	2,790
42.311.40.25		25	175	50	C	40	-
42.311.40.32		32	180	50	C	46	-

REF.	
42.311.40.08	14008
42.311.40.10	14008
42.311.40.12	14008
42.311.40.16	14010
42.311.40.20	14010
42.311.40.25	14010
42.311.40.32	14010

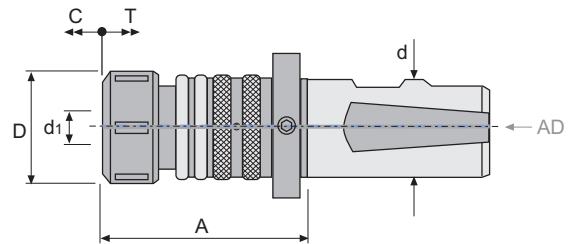
DIN 1835-B
42.610






TAPPING HEAD WITH AXIAL COMPENSATION

hold tape with DIN 6499 (ER) collets and with inner coolant

GEWINDESCHNEID-WECHSELFUTTER MIT AXIAL-LÄNGENAUSGLEICH

Befestigung mit Spannzangen DIN 6499 (ER) und mit Innenkühlung



REF.	d mm			A mm	D mm	C mm	T mm			
42.610.20.16	20	ER16	M3-M12	65	28	5,5	6,0	45316	50216	0,430
42.610.25.16	25	ER16	M3-M12	67	28	5,5	6,0	45316	50216	0,440
42.610.25.25		ER25	M4-M20	90	42	10,5	7,5	45325	50225	0,840
42.610.25.40		ER40	M8-M33	106	63	10,0	10,0	45340	50240	1,320
42.610.32.40	32	ER40	M8-M33	106	63	10,0	10,0	45340	50240	1,480

Compensation in compression (C) and tension (T).
Compression can be blocked by turning the rear ring (A).
Control of threading depth.
Central coolant supply.

Ausgleich der Kompression (C) und der Traktion (T).
Die Kompression kann mit dem Ring (A) blockiert werden.
Kontrolle der Gewindetiefe.
Kühlmittel durch die Mitte.

* SUPPLIED WITH WRENCH / * GELIEFERT MIT SCHLÜSSEL

REF.	ACCESSORIES / ZUBEHÖR
ERXX	Collets double slot DIN 6499 - Form B (ER) / Spannzangen mit Doppelnut DIN 6499 - Form B (ER)
ERCXX	Sealed collets DIN 6499 (ER) / Abgedichtete Spannzangen DIN 6499 (ER)
ERTXX	Collets DIN 6499 - Form Canela (ER) / Spannzangen DIN 6499 - Form Canela (ER)
40.453..	Collet chucks for DIN 6499 (ER) collets / Spannzangenfutter für DIN 6499 (ER) Spannzangen
40.455..	Long collet chucks for DIN 6499 (ER) collets / Lange Spannzangenfutter für DIN 6499 (ER) Spannzangen



ERXX



ERCXX



ERTXX



40.453..



40.455..

For more information see page / Für weitere Informationen siehe Seite: K.13, K.17, K.19, J.08, J.09

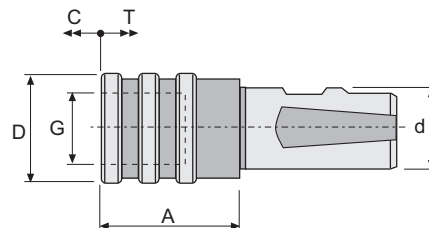
DIN 1835-B+E





42.620**QUICK CHANGE TAPPING HEAD WITH AXIAL COMPENSATION**

with tap chucks bushings system Bilz

GEWINDESCHNEID-SCHNELLWECHSELFUTTER MIT AXIAL-LÄNGENAUSGLEICH

mit Gewindebohrer-Buchsen System Bilz



REF.	d mm	G N ^o . Ø		A mm	D mm	C mm	T mm			 Kg
42.620.20.12	20	1 19	M3-M12	41	38	9	9	710XX	750XX	0,350
42.620.20.20		2 31	M8-M20	63	55	15	15	720XX	760XX	0,860
42.620.25.12	25	1 19	M3-M12	41	38	9	9	710XX	750XX	0,430
42.620.25.20		2 31	M8-M20	63	55	15	15	720XX	760XX	0,880
42.620.32.12	32	1 19	M3-M12	41	38	9	9	710XX	750XX	0,600
42.620.32.20		2 31	M8-M20	63	55	15	15	720XX	760XX	1,050
42.620.32.33		3 48	M14-M33	97	79	24	24	730XX	770XX	2,690
42.620.40.12	40	1 19	M3-M12	41	38	9	9	710XX	750XX	-
42.620.40.20		2 31	M8-M20	63	55	15	15	720XX	760XX	-
42.620.40.33		3 48	M14-M33	97	79	24	24	730XX	770XX	-

COMPENSATION IN COMPRESSION (C) AND TENSION (T)
AUSGLEICH DER KOMPRESSIION (C) UND DER TRAKTION (T)

REF.	ACCESSORIES / ZUBEHÖR
710XX..730XX	Quick change adapters without overload clutch / Schnellwechseleinsätze ohne Sicherheitskupplung
750XX..770XX	Quick change adapters with overload clutch / Schnellwechseleinsätze mit Sicherheitskupplung



710XX..730XX



750XX..770XX

For more information see page / Für weitere Informationen siehe Seite: K.06, K.07